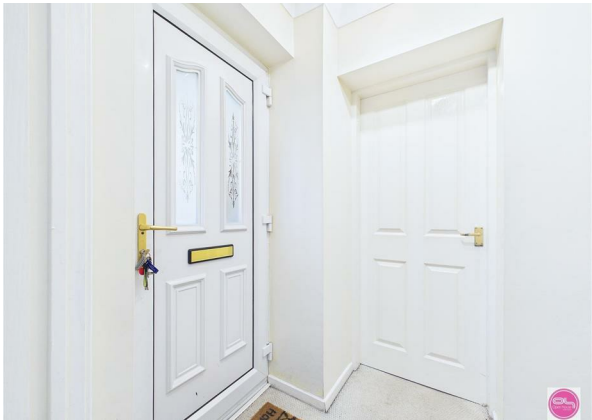


Mickleton Close, Church Gresley, Swadlincote, DE11 9FE

£300,000

Council Tax Band: D



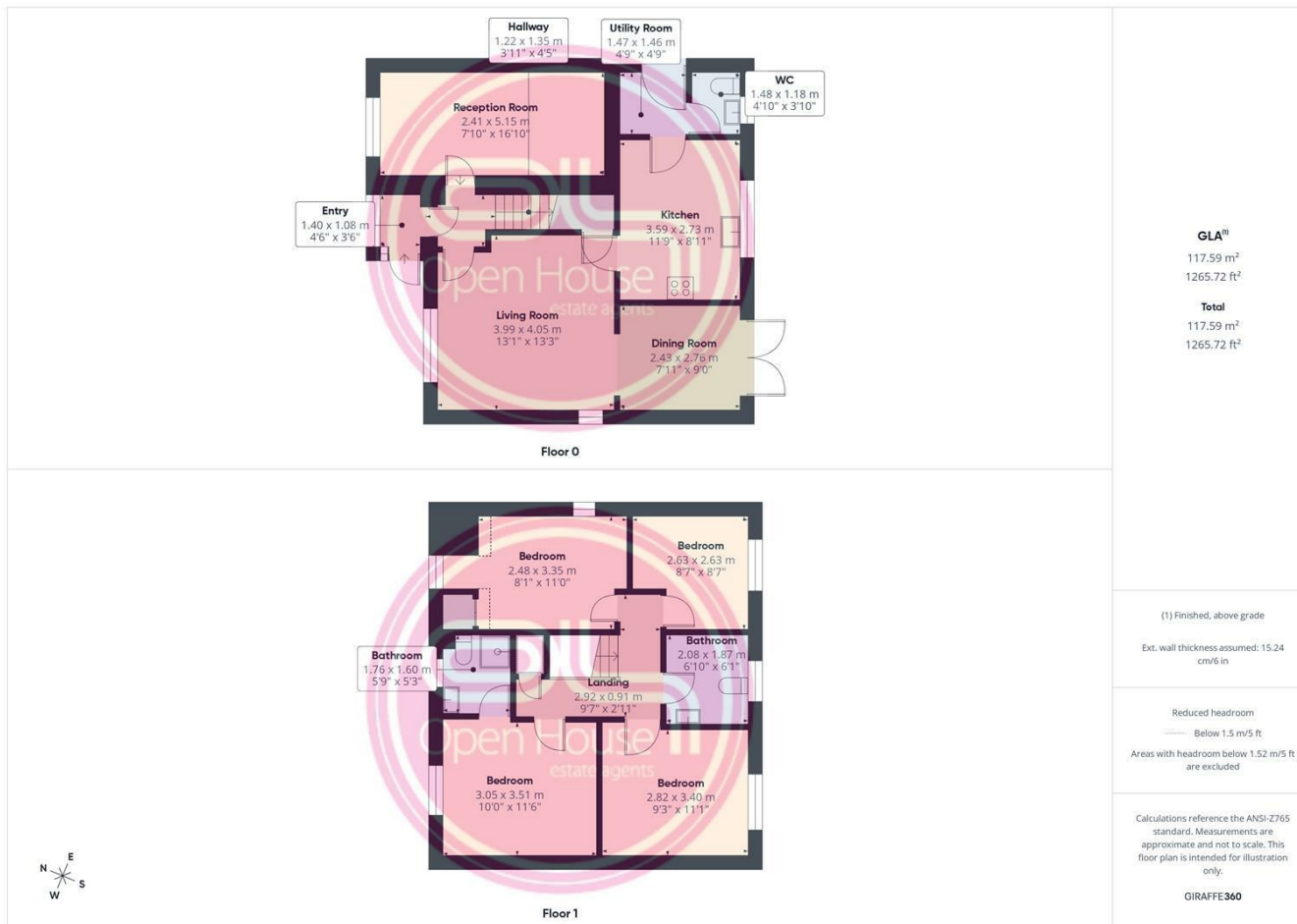
Positioned within a desirable cul-de-sac setting, this well-proportioned four-bedroom detached home offers spacious and versatile accommodation ideal for family living. The property provides a practical layout with multiple reception spaces, a modern kitchen with adjoining dining area, and four bedrooms to the first floor.

The ground floor features a welcoming entrance leading into a bright living room, separate reception room, kitchen, dining room, utility room, and WC. Upstairs, four bedrooms are served by a family bathroom, offering comfortable accommodation for growing families.

Externally, the property benefits from off-road parking to the front and an enclosed rear garden with patio and lawn, providing an ideal space for relaxing or entertaining.



Open House Burton & Swadlincote



Energy Efficiency Rating		
	Current	Potential
Very energy efficient - lower running costs		
(92 plus) <b>A</b>		
(81-91) <b>B</b>		
(69-80) <b>C</b>		
(55-68) <b>D</b>		
(39-54) <b>E</b>		
(21-38) <b>F</b>		
(1-20) <b>G</b>		
Not energy efficient - higher running costs		
<b>England &amp; Wales</b>	EU Directive 2002/91/EC	